

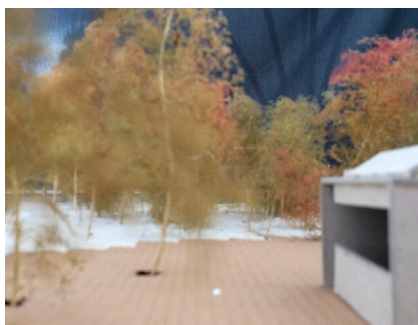
Forest Garden

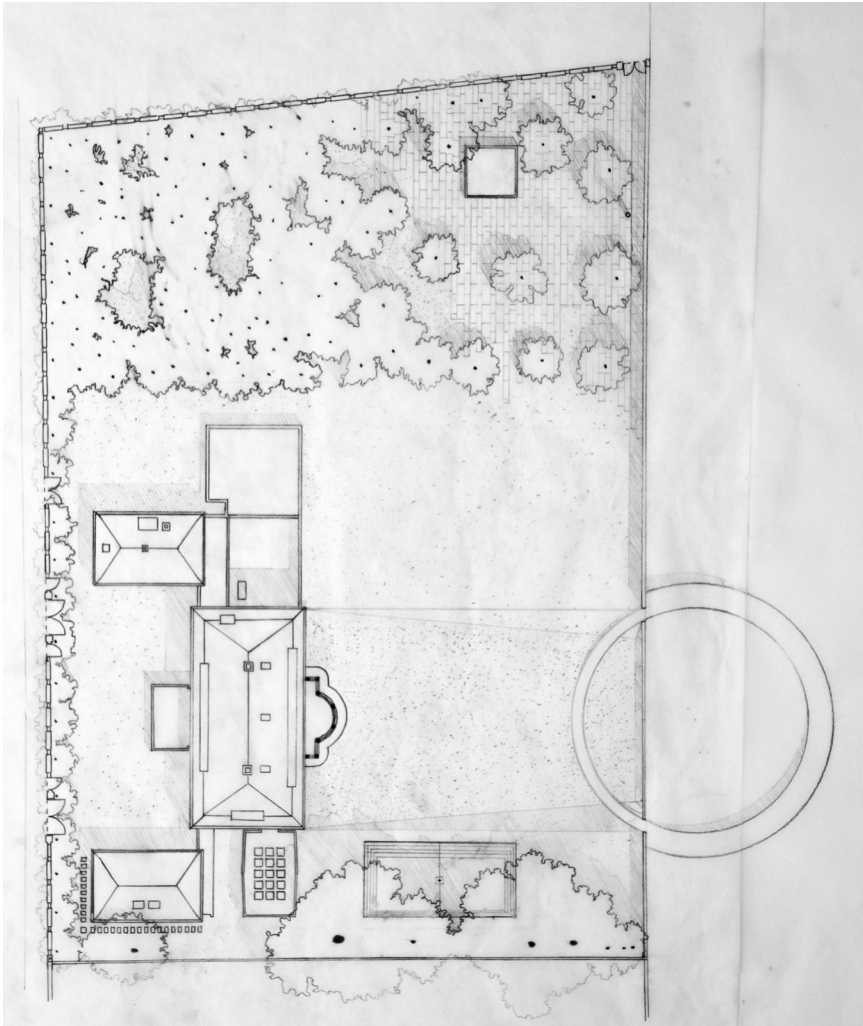
reflecting - strolling - exposing

Simon Specker

The garden is structured by three programmatic ideas, based on the concept of the garden as a stage for its broad range of usages. A grove with a mix of light and small trees defines a new intimate space and a threshold between street and garden. A new circular dock cuts through the strict borderline at the coast and widens to become a platform on the sea. And lastly a reflecting water basin creates a quiet and calm atmosphere in combination with the existing trees and the extension pavilion of the embassy. The garden can transform in case of bigger public events. The basin can be drained and transformed into an open-air auditorium. Tents can be placed within the gardens, the bigger ones connected to the new courtyard, the smaller placed inside the forest.

To respond to the future threat of rising sea level, an inclination between the dock and the villa is planned, allowing controlled flooding in extreme cases.

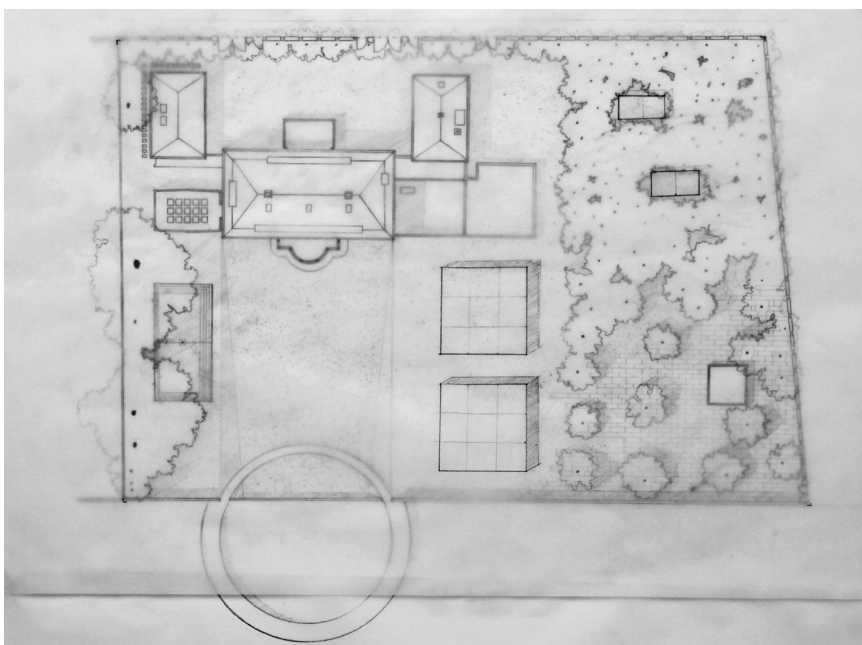




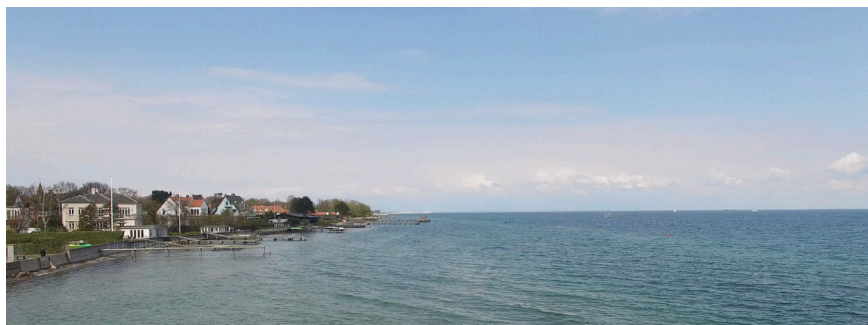
Floor Plan

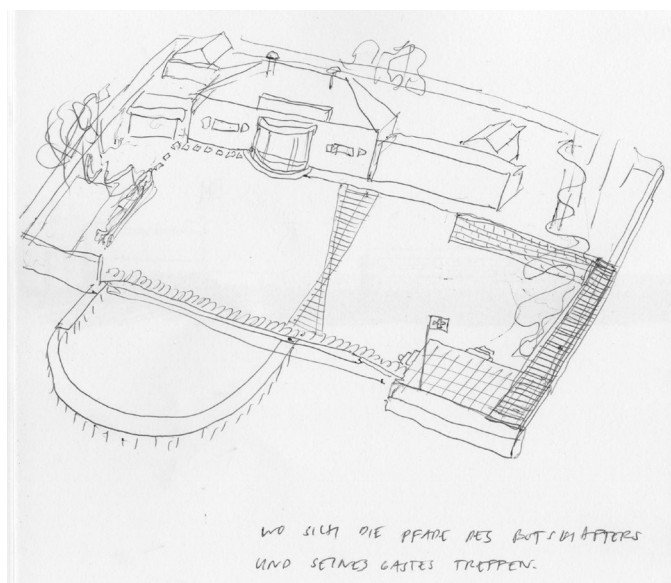
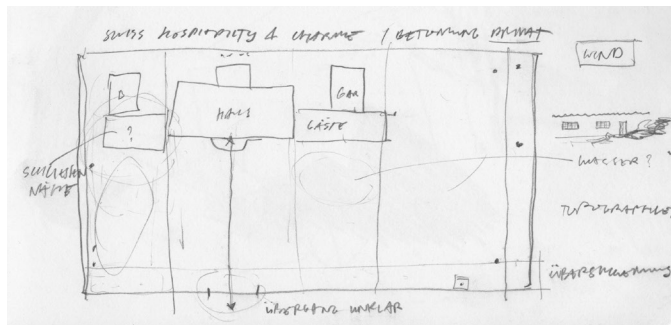


Sections



Temporary use of spaces





Sketch Book