

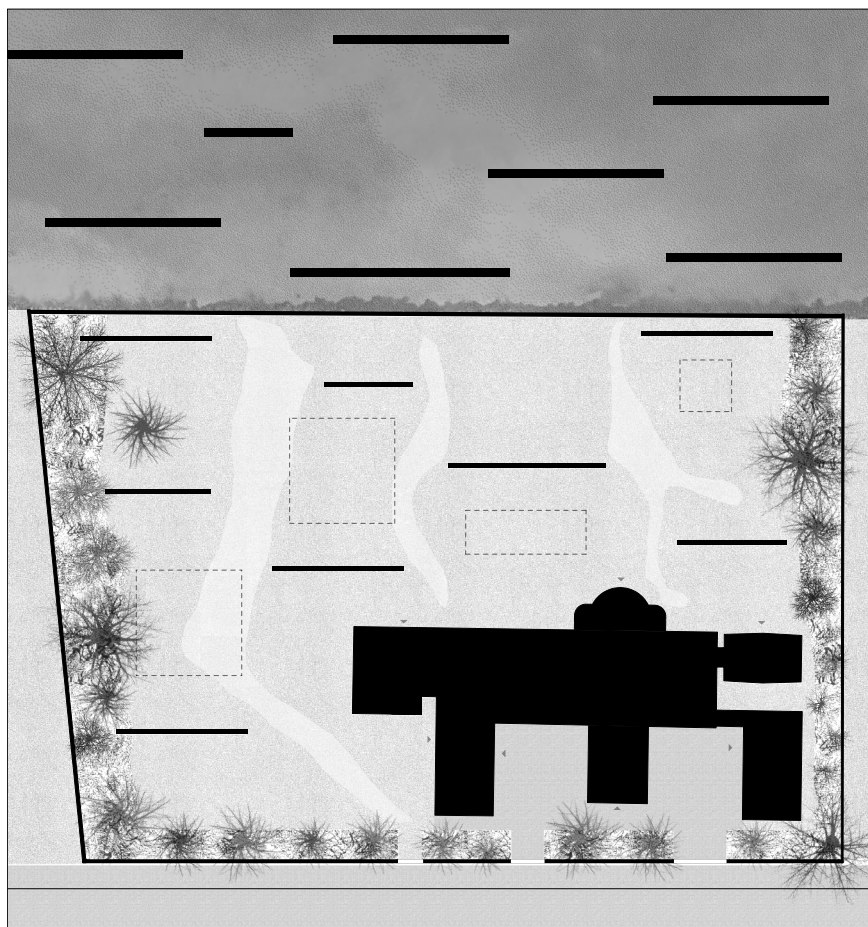
Wind Shadow

Lukas Ryffel

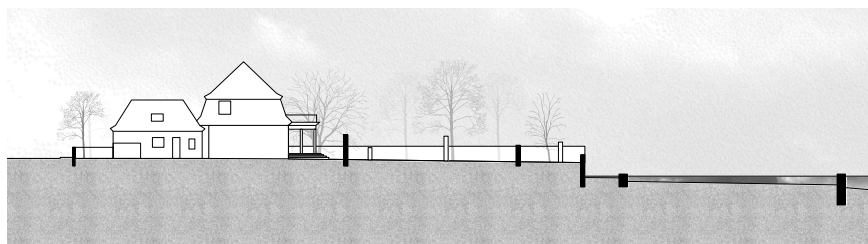
The horizon, the wind, the bright light and long shadows are typical elements of the Danish coast, which immediately attract the attention of an alpine being. A series of brick walls are proposed, which interact with these elements and hereby structure the ambassadors garden. Rooms of wind shadow stand in contrast with paths in the wind. A geometrical shadow play dominates the garden during certain times of the day, to disappear again later. New horizons are created and the sensual importance of the sea varies depending on the height of the walls. Additionally, the system continuous into the sea as wave breakers for the stabilization of the site threatened by the future sea level rise.

By adding the element of the brick wall into the garden, the concept introduces different spaces, that can be used for the varying events happening here, be they representational or within the ambassador's family, while emphasizing the elements of the Danish landscape through a Swiss lens.

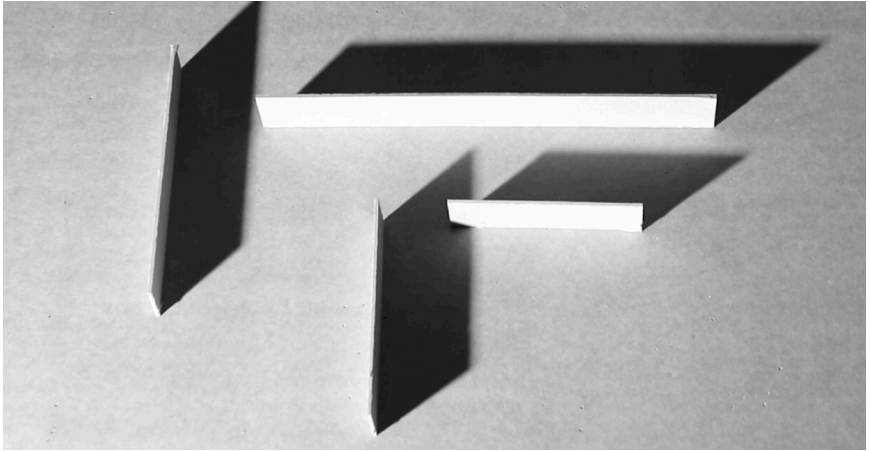




Floor Plan



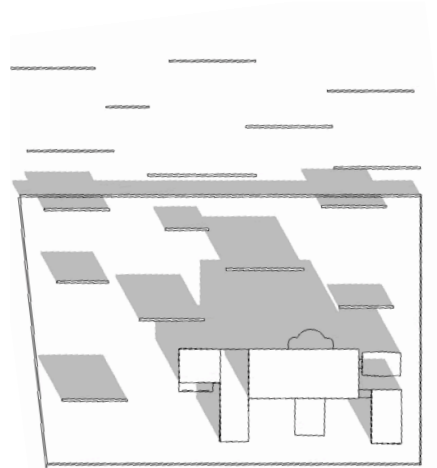
Section



Shadow



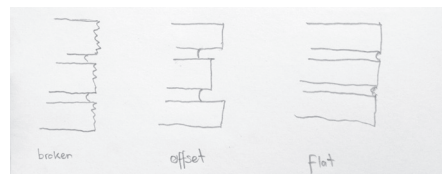
Wind



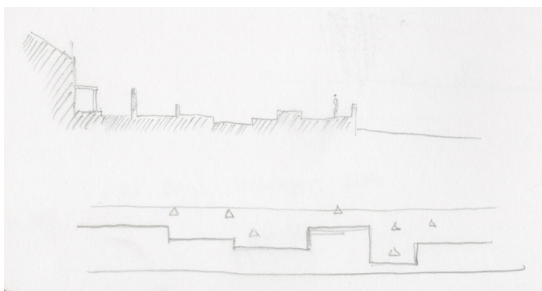
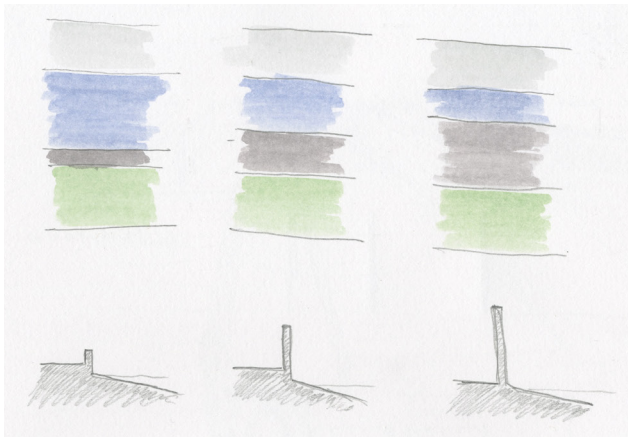
Shadow



Brick







Horizons