

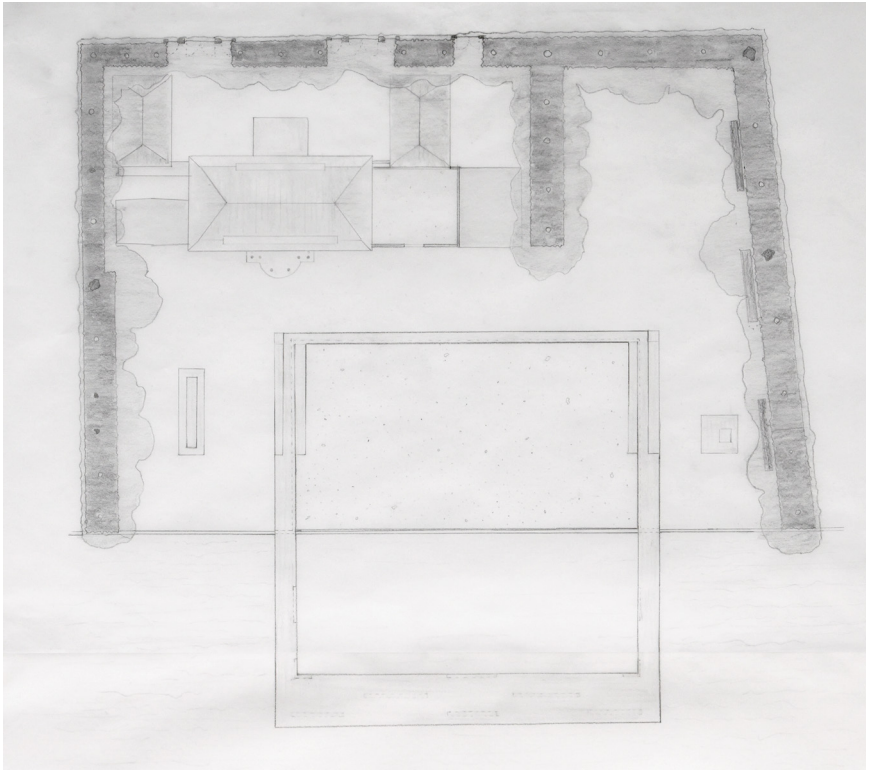
Cadrage

Lloyd Broda

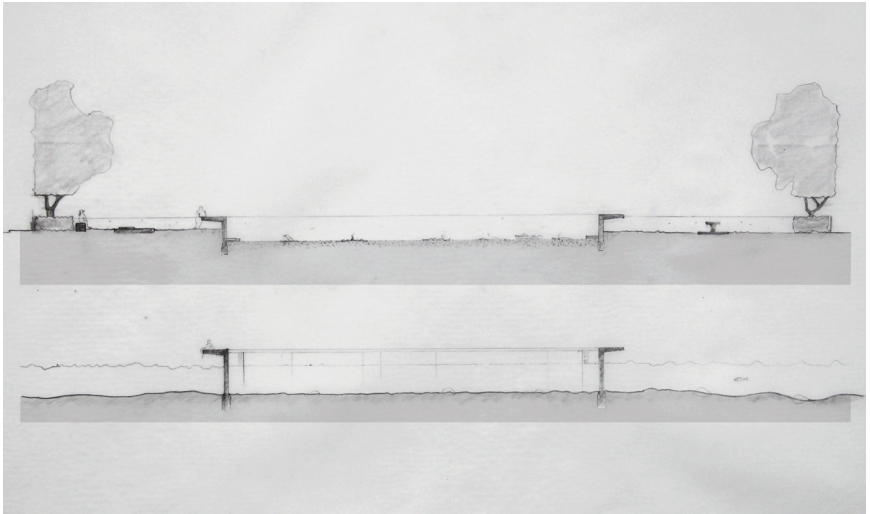
The proposal considers the garden as a stage, a set for uses of different scales, and the design focuses on setting up a *cadre* for the expected visitors and functions. There are two frames, two *cadrages*. The first one is a platform, made out of sanded concrete, which rests on a flood protection wall. It condenses and tames the landscape into the garden: the sea, in the form of a pool where the water would be calm; and the shore, in the form of a sunken mineral garden, on which brackish water vegetation could spread abstractly.

The second frame is a softer vegetative rim of bosquet, running around the property's limit. The lower scented hedges are cut at a height of 1.1 metre to follow that of the protection wall. Springing out of them, a single straight row of lime-trees whose trunks are clear of any branches for another 2 metres forms the upper hedge. The trees are trimmed on the public side but let loose in the garden.

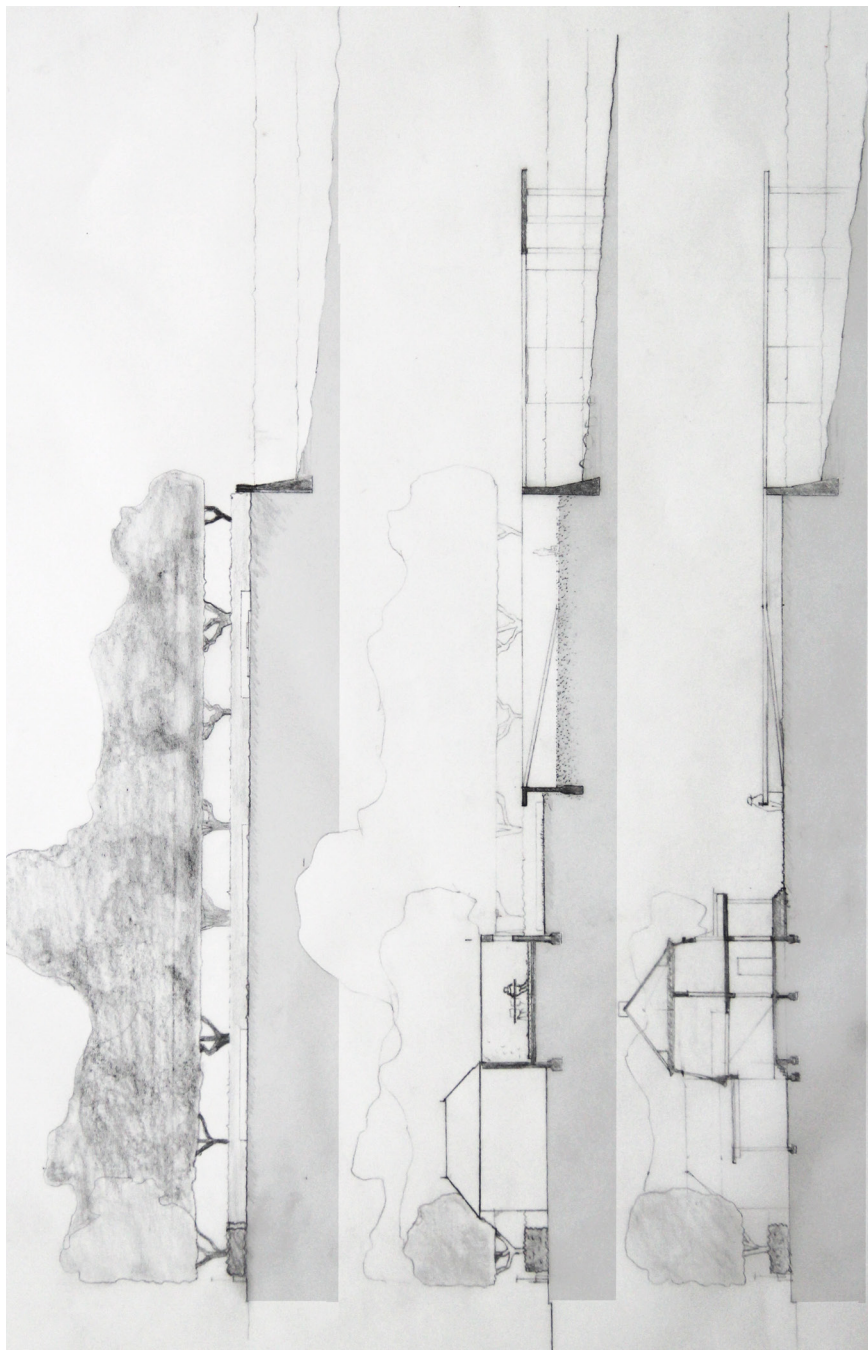
The garden is designed for 3 scales: the family scale of the patio, the fireplace or edge of the pier; the scale of a diplomatic visit, for which the long table and the large benches can be used; finally, the scale of a great event, in which case large tents can be installed, the sunken mineral garden used as a place for stands, and the platform as a dock, a sitting area with stands, or a bar at elbow-level.



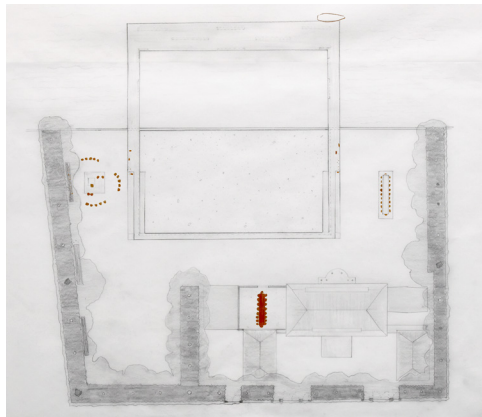
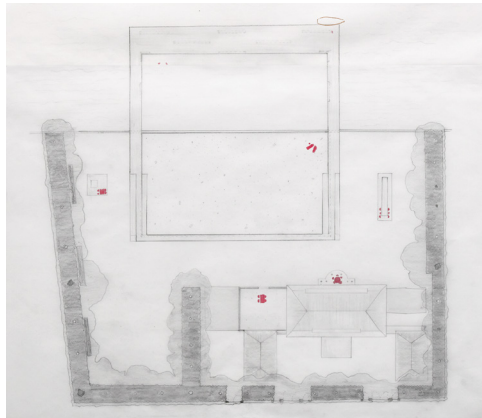
Floor Plan



Sections



Sections



The garden as a stage: Three different scales



Collection of coastal plants



First sketches of a mineral garden