

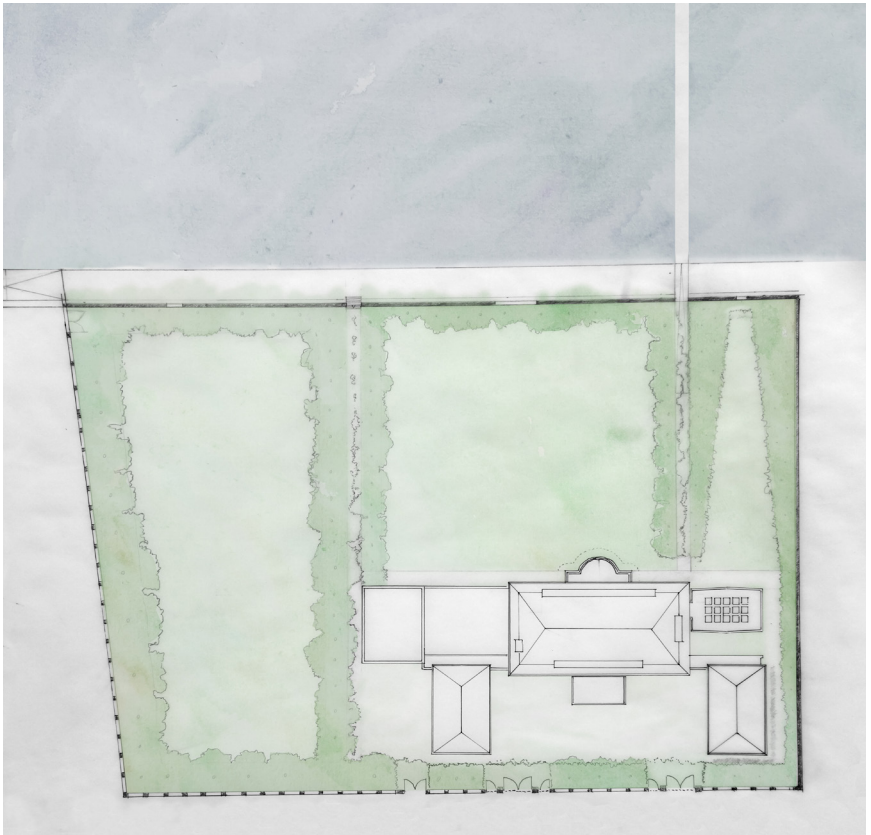
Linden

Johanna Holer

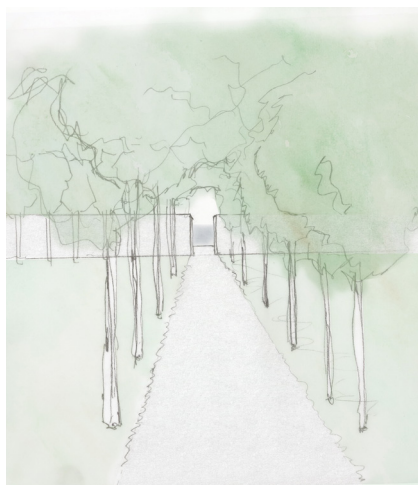
In Hellerup the linden tree is used for public spaces in form of tree-lined avenues as well as for marking the boundaries of private gardens in form of hedges. The plant creates different spatial perceptions depending on its usage. This phenomenon is adapted to the embassy garden, by dividing it into three zones: a public zone for big events, a representative one in front of the villa for receptions and dinners and a private one as a retreat for the family. All of these three “rooms” are lined by a row of linden trees which vary in height and density depending on the degree of publicity. The public zone is enclosed by larger linden trees, the private one by a dense linden hedge.

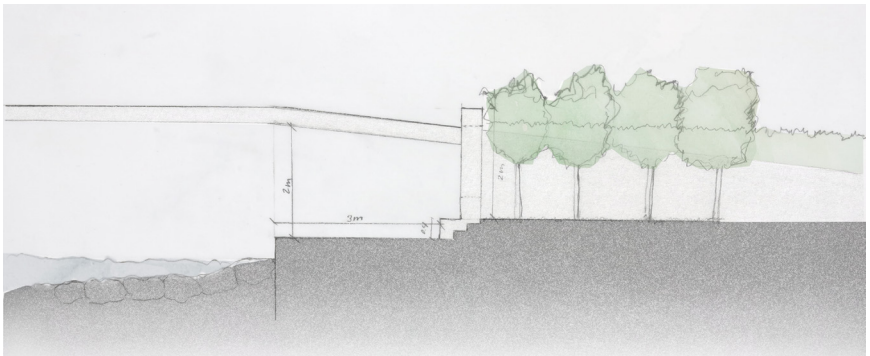
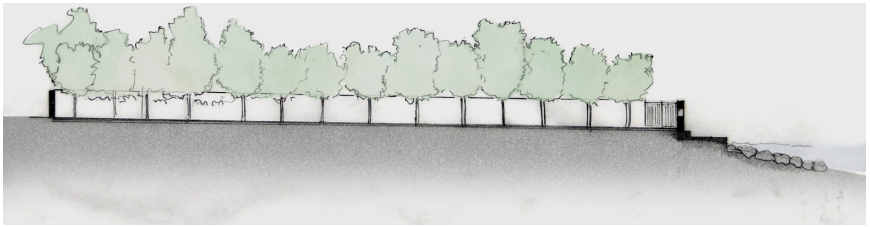
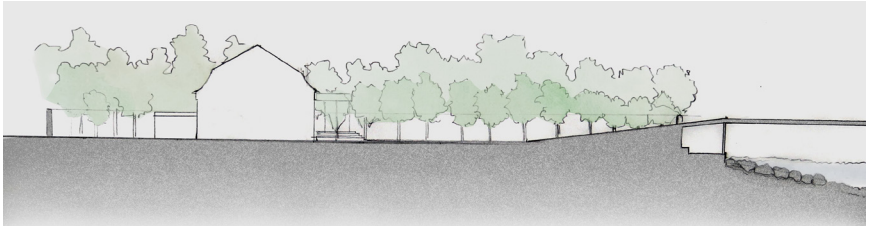
A new flood protection wall guards the garden from future sea level rise. Five openings establish different visual relationships between the garden and the sea. Each “linden room” has its own window to the sea, each varying in size and position. Two paths are laid out in between the “rooms”, allowing a direct connection to the sea. The one between public and representational part, leads to the public footbridge behind the protection wall. For the ambassador’s family and his guest as well as for the neighbours it provides access to the sea and comfortable place to rest and enjoy the coast. The path between the representative and the private part leads to a dock, allowing boats to land.

The linden creates different rooms for different occasions, it is an element of separation and interconnection at the same time. A wall of trees which communicates different meaning depending on the point of view.

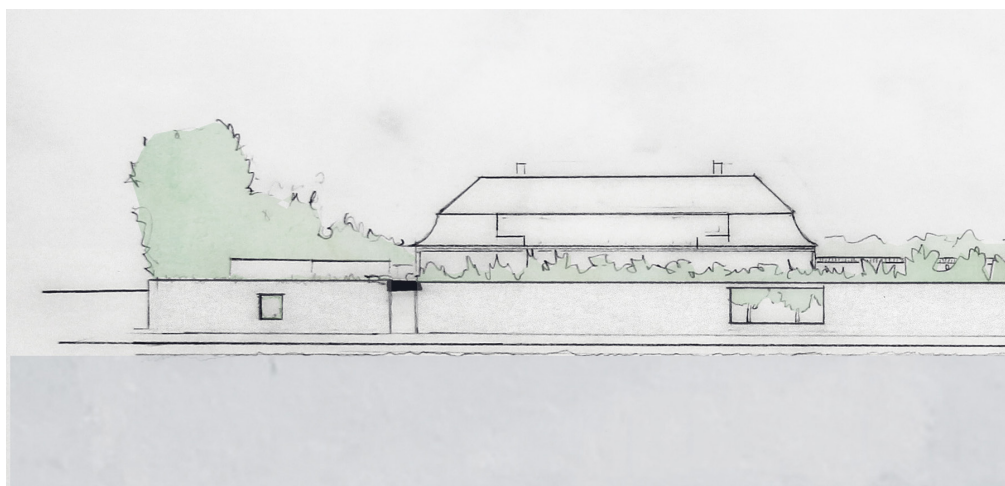
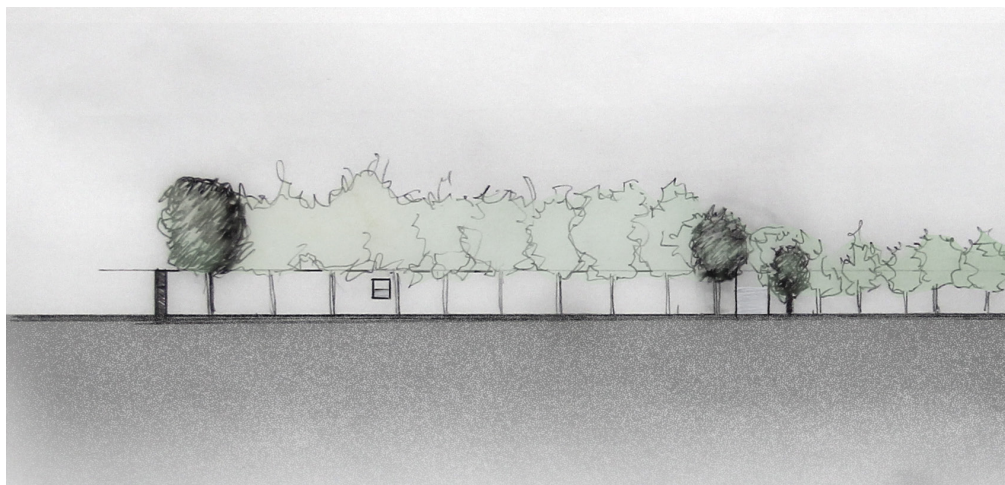


Floor Plan





Sections and Detail



Section and front view

