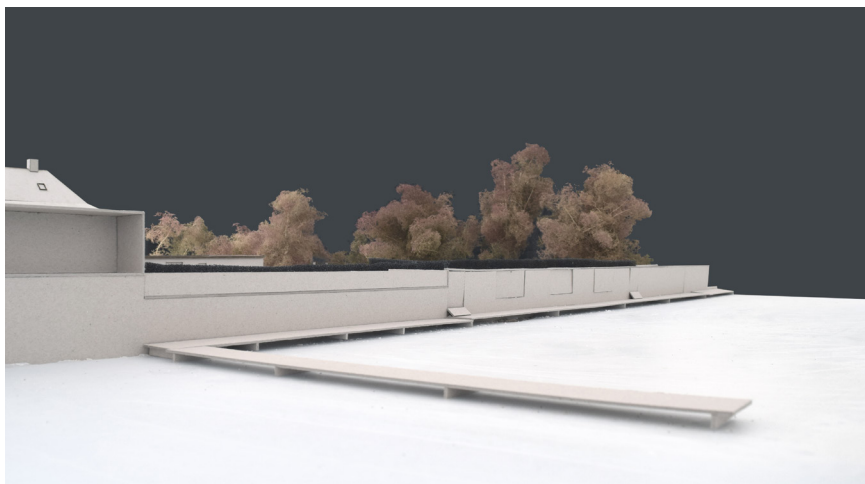


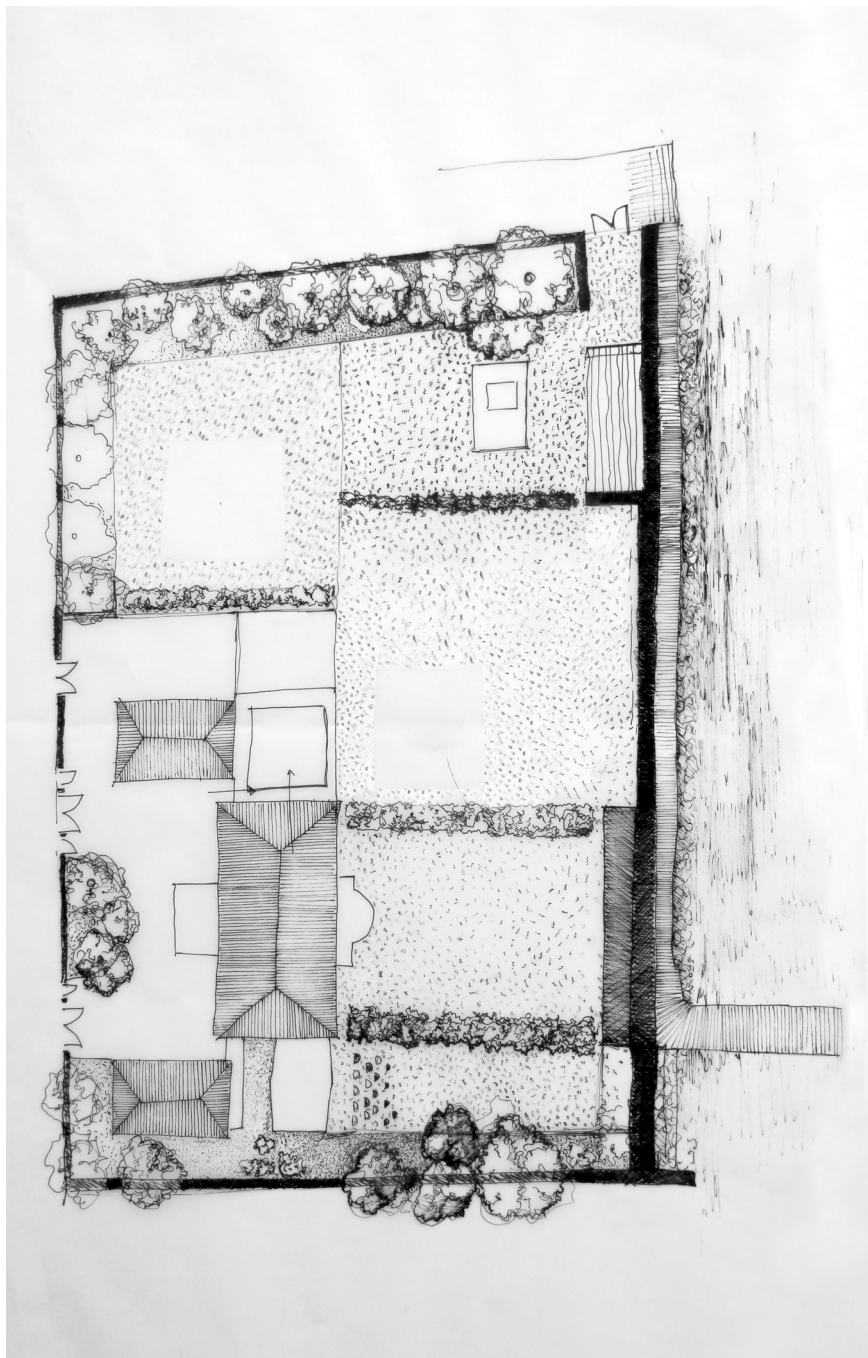
# Garden as a House

Agnieszka Latak

Starting point for my project was the high-water protection wall, necessary infrastructure against rising sea level and flood. By building the wall the garden will be closed from four sides and will actually become a courtyard. I found it interesting to treat the garden as a house: It will have different rooms (two big rooms for events, an intimate space with the fireplace, an enclosed space for the family and a space connected to the pavilion). And these will have diverse qualities defined by walls (outer mineral wall, inner green walls) and, what is also important, public access could be controlled, like in the ambassador's house (sometimes open for public, sometimes fully private). This public access, but also the relationship with the sea, will be established by a newly planned wall, a wall which is a need, but can offer additional values – it could become a sitting tribune, covered sitting bank, a room, a storage place, projection wall.

To sum up, I found two points important. First of all, what is particular about this garden is that it has to be sometimes public and sometimes private and, for me, the tenant of the house should have a control over it. Second significant issue is that the necessary infrastructure should not be treated as an obstacle but a potential to give a garden additional quality.





Floor Plan

